

A YEAR OF
Golden Moments



Introducing a new design standard
Meet the beautiful

SQUADRON 53



Every. Perfect. Detail.



No line or curve is left unconsidered

Let it be said with undeniable certainty that nothing was left to chance when it came to designing and building the Squadron 53.

Every precisely-placed curve, every elegant edge, every understated shade of colour has its place in the grand scheme of things. And simply because absolute attention to detail and a genuine appreciation of quality go hand-in-hand.

For us, painstakingly handcrafting an object of luxury such as the Squadron 53 is a matter of personal enjoyment and inner satisfaction...both ours and yours. In fact, you have just to run your hand over the perfectly matched grain of the 53's woodwork, or take in the graceful arch of its swept flybridge, or immerse yourself in a space so thoroughly considered to know it's all true.

SQUADRON
53

INTRODUCTION

MAIN
FEATURES

EXTERIOR
DESIGN

INTERIOR
DESIGN

PRINCIPLE
DIMENSIONS

GENERAL
ARRANGEMENTS

CELEBRATING
50 YEARS

DEALERS

FAIRLINE
YACHTS



Engineered to be greater than the sum of its parts

When we embarked on our new design vision for the Squadron 53, we made a conscious decision to be bold. We even dared to re-imagine the classic Fairline form in collaboration with one of Italy's most exciting yacht designers, Alberto Mancini. But we never did so at the expense of our uncompromising, engineering heritage.

Which means every feature on the Squadron 53 – whether you can immediately see it, or not – has been carefully thought about and assembled with the entire yacht in mind.

- **Exterior styling by Alberto Mancini**
 - **Foredeck seating**
 - **3-person cockpit sunpad**
 - **Skylight above lower helm**
 - **3 or 4 cabin layouts**
 - **Flat floor from the cockpit to lower helm**
 - **Full standing height in master cabin with a flat ceiling throughout**
- Optional equipment highlights:**
- Submersible bathing platform
 - Gyroscopic stabilisation
 - Single berth crew cabin
 - Harman Kardon audio upgrade
 - Marble upgrade throughout the interior
 - A choice of shaft driven engines:
 - Twin Volvo D11-675 with 1,350mhp and a 30 knot estimated maximum speed
 - Twin Volvo D11-725 with 1,450mhp and a 32 knot maximum speed
 - Twin Caterpillar C12.9 with 1,700mhp and a 34 knot estimated maximum speed

Designed to
take your breath away




SQUADRON
53

INTRODUCTION

MAIN
FEATURES

EXTERIOR
DESIGN

INTERIOR
DESIGN

PRINCIPLE
DIMENSIONS

GENERAL
ARRANGEMENTS

CELEBRATING
50 YEARS

DEALERS

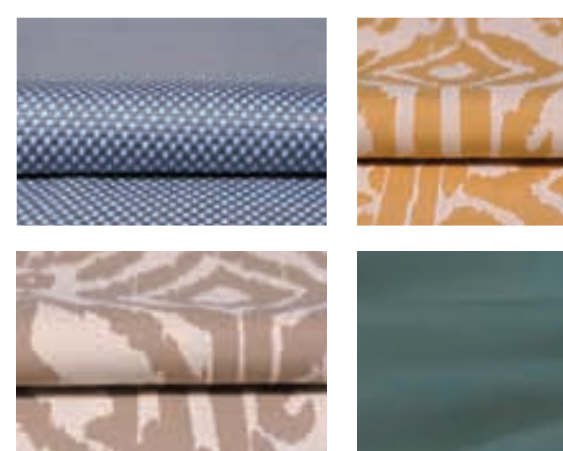
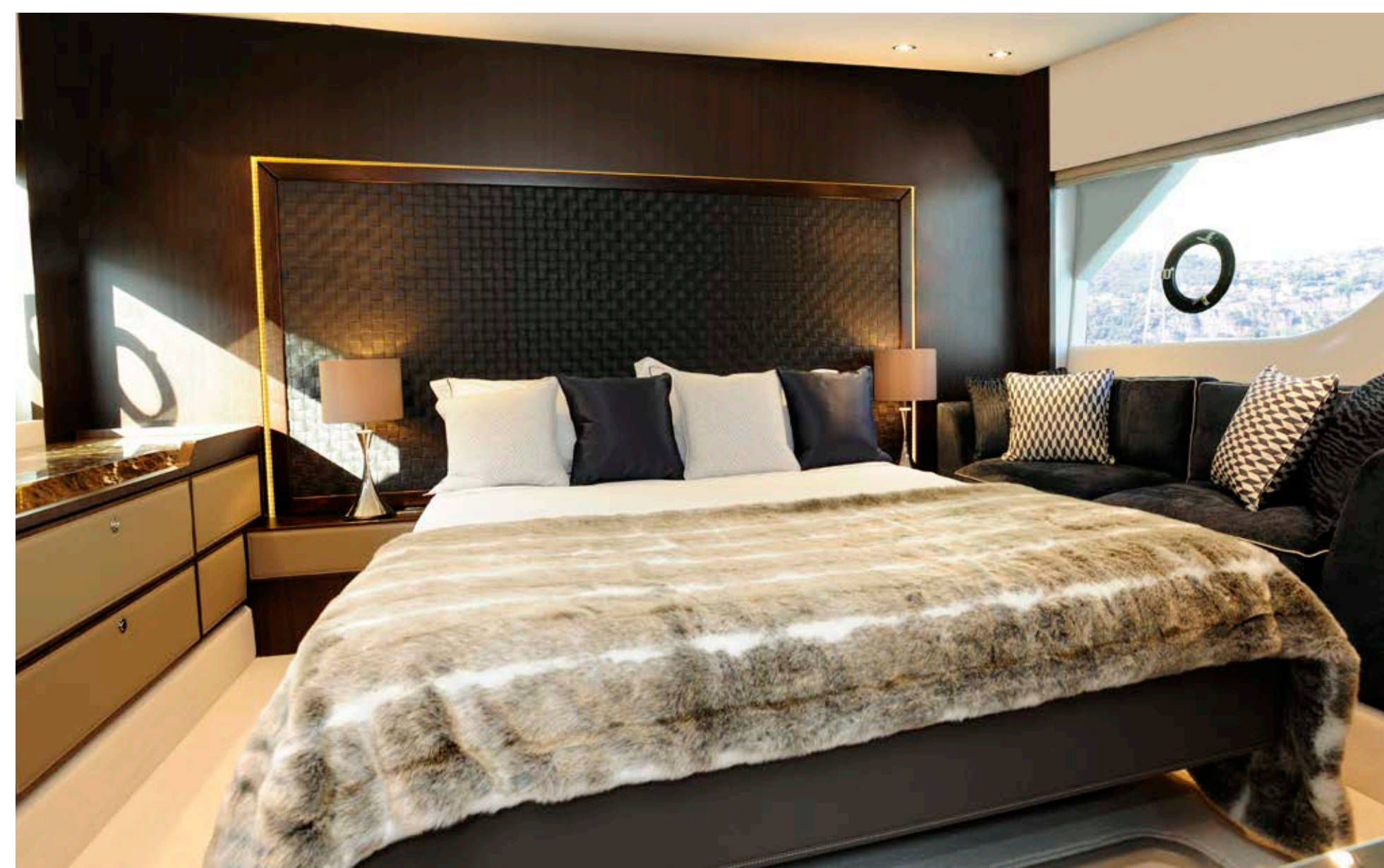

FAIRLINE
YACHTS





True style is beyond skin-deep

In the spirit of building the perfect yacht at every possible level, we have also carefully created four different interior design schemes for you to choose from:



AMALFI

Inspired by Liguria's local architecture, this scheme exudes the sunny warmth synonymous with fragrant Italian lemon trees and the umbrella-lined shores of the Amalfi coast.



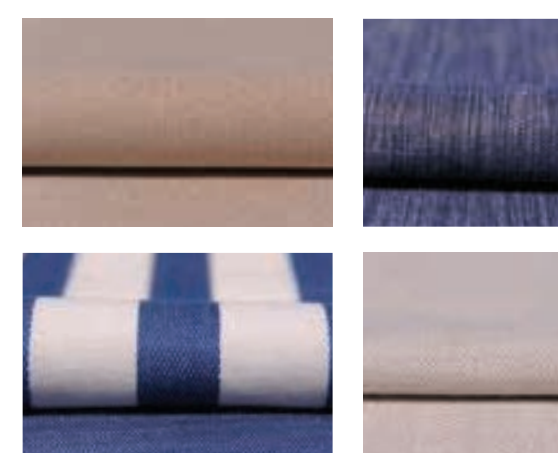
CAPRI

Understated, earthy colours, effortlessly combined with rich natural textures. All the hallmarks of an interior design collection that is as gentle as the Mediterranean breeze.



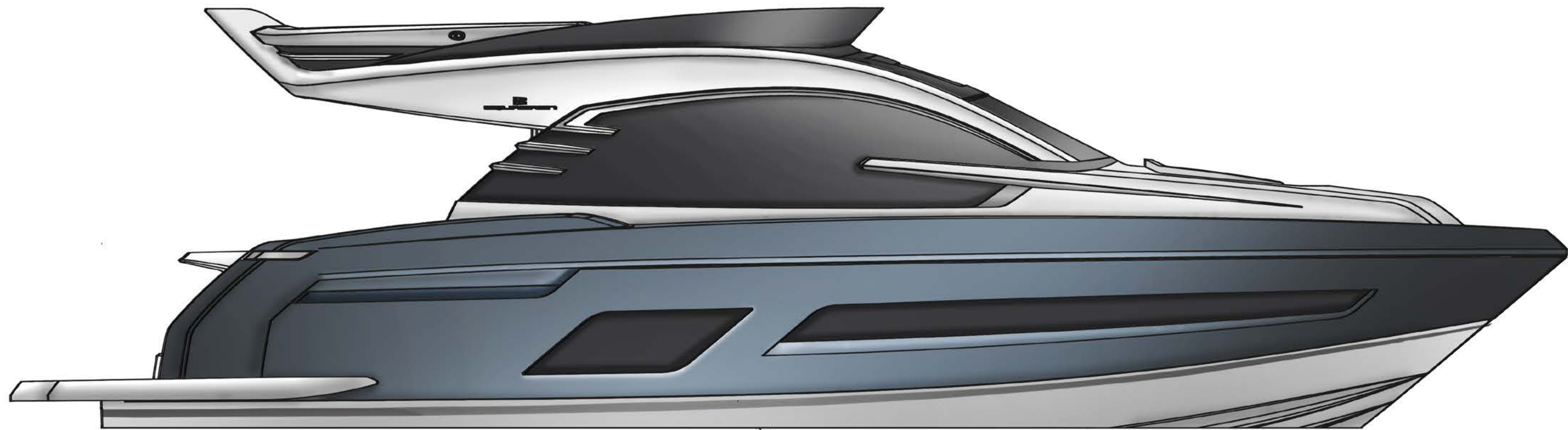
HAMPTONS

Evoking elegant vintage design cues, whilst offering a bold and contemporary interpretation of the luxury that was once the preserve of America's East Coast.



ST. TROPEZ

An ode to the sea where all manner of deep, oceanic blues tastefully swirl with muted greys, delicate creams and classic nautical motifs.



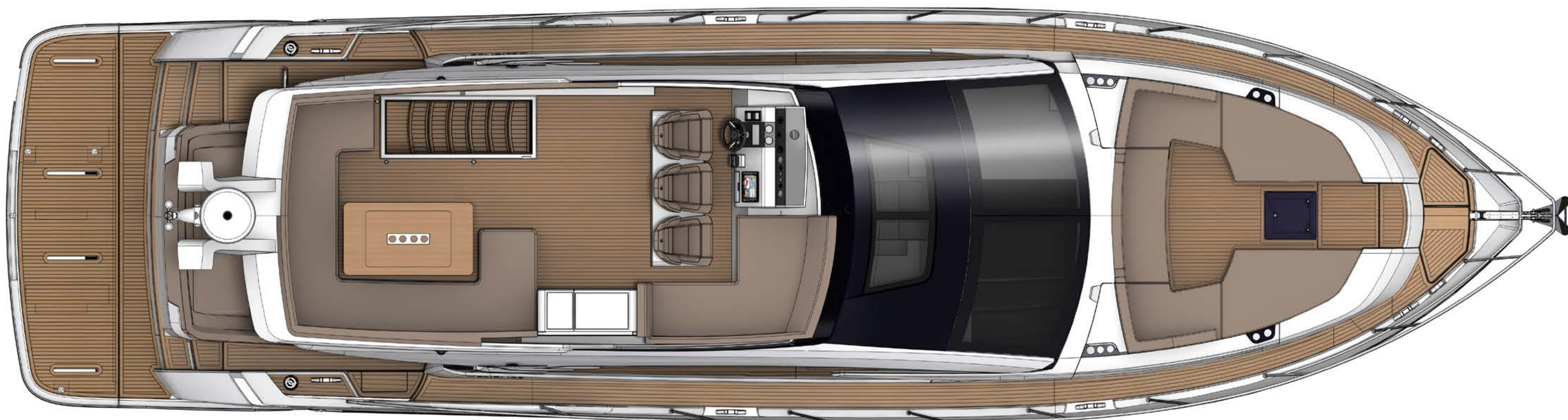
Beautifully balanced proportions

- Length overall (inc. pulpit): 55ft 6in (16.92m)
- Length overall (ex. pulpit): 53ft 6in (16.32m)
- Beam: 14ft 10in (4.52m)
- Number of berths: 6 – 9
- Draught: 3ft 11in (1.20m)
- Height above waterline (unloaded): 18ft 2in (5.56m)
- Transport height: 17ft 1in (5.15m)
- Dry weight (approx.): 21.16 imp. tons / 23.69 US tons (21,000kg)
- Fuel capacity: 530 gallons / 637 US gallons (2,412 litres)
- Water capacity: 120 gallons / 145 US gallons (550 litres)

[CLICK HERE FOR
FULL SPECIFICATIONS](#)



Twin helm



Triple helm

Flybridge

This has to be one of our favourite spaces on the Squadron 53, with its uninterrupted 360° views and tremendous entertainment potential.



Galley up, aft



Galley up, forward

Main Deck – Galley Up

We are also very happy to point out that the Squadron 53 is the first-ever Fairline yacht of its size to feature a cleverly designed seating area on the foredeck. As for inside, the galley can be located in one of two areas.

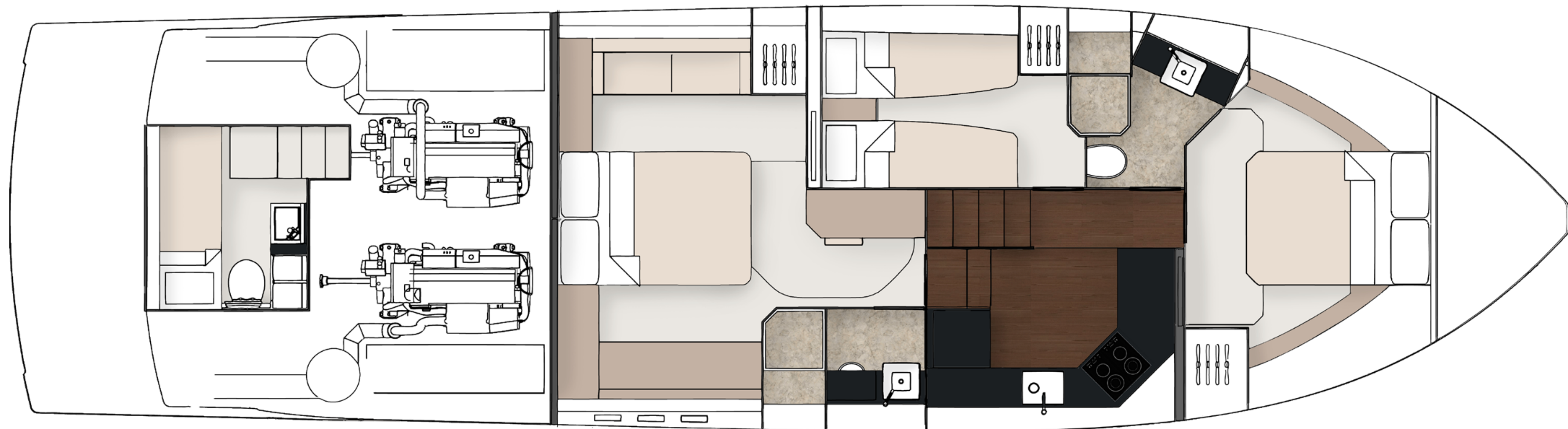


Main Deck with saloon sideboard



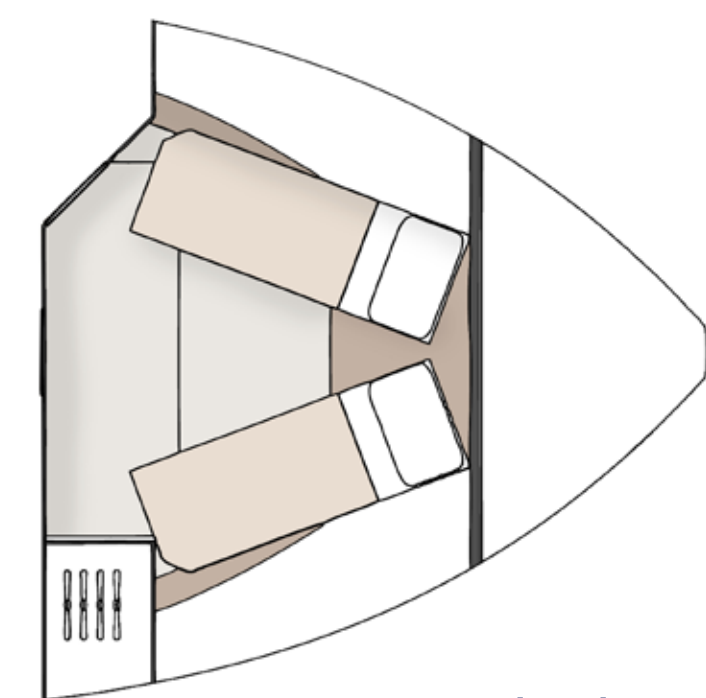
Main Deck with saloon couch

Main Deck – Galley Down

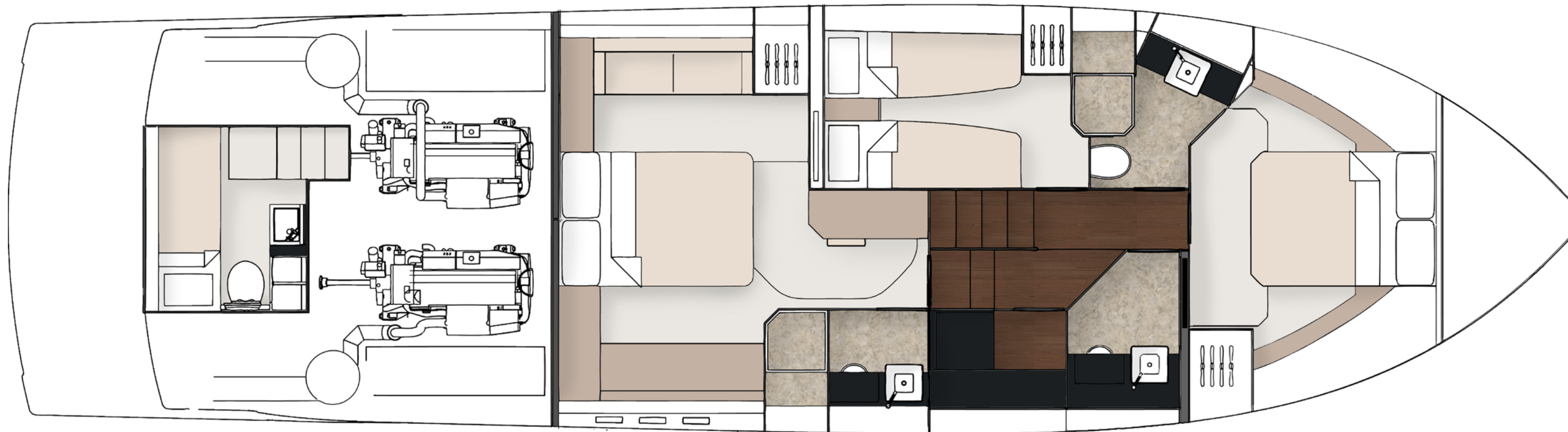


Lower Deck – 3 Cabin & Galley Down

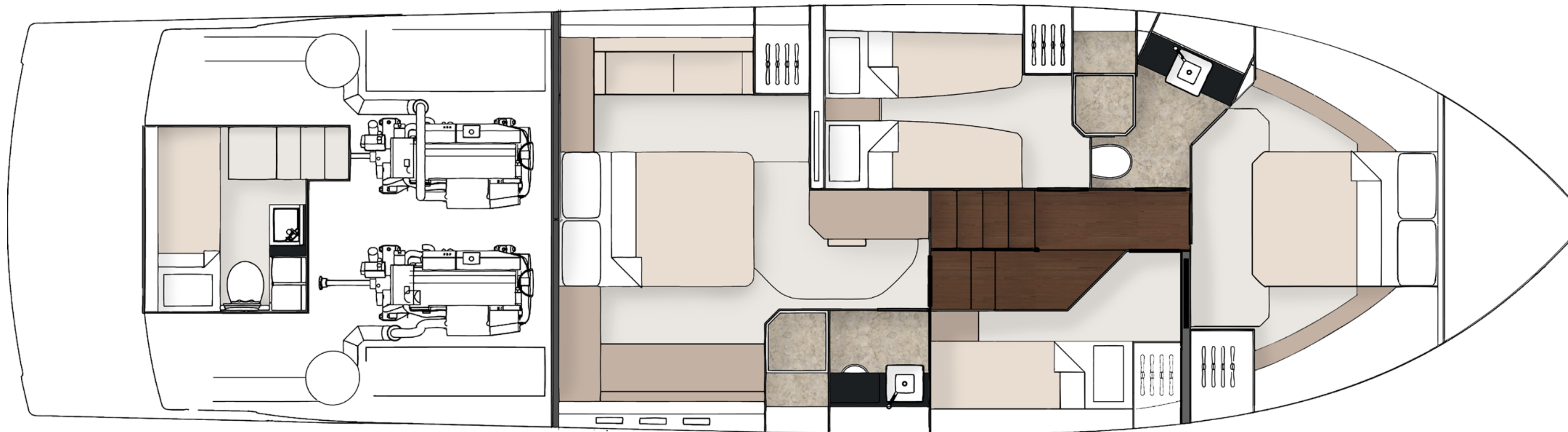
Spacious, airy and the epitome of on-board luxury, the lower deck is also fully customisable to suit your needs. You can choose between either a 3 or 4-cabin configuration.



Forward cabin
scissor berth option



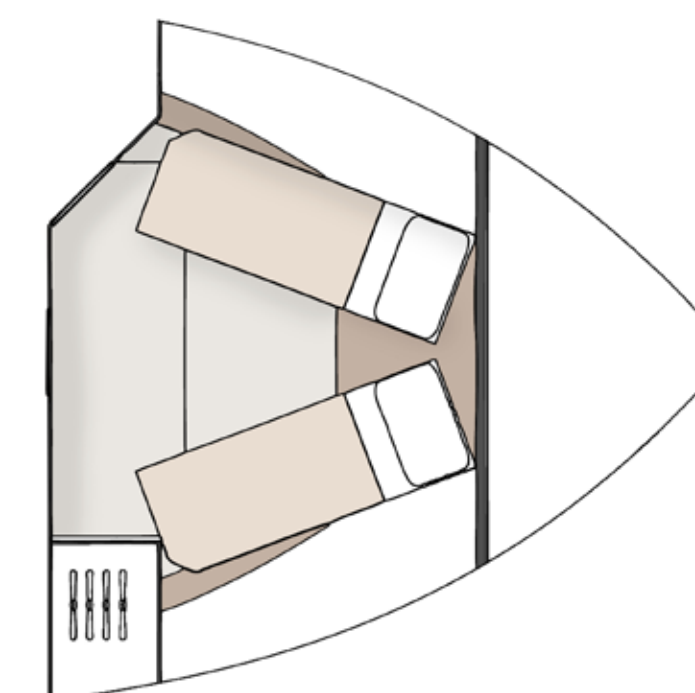
3 cabin with day head & utility area



4 cabin

Lower Deck

Enjoy extra space for your guests by specifying the optional fourth cabin which contains a pair of full length bunk beds.



Forward cabin
scissor berth option

2017 is our 50th anniversary

And we're celebrating a #YearOfGoldenMoments

It's not enough to build a beautiful boat just for the sake of it. Building the kind of yachts which we are proud to put the Fairline name to, requires something more than just engineering genius or craftsmanship. It also requires the desire to create extraordinary moments for whoever owns it. Moments of joy, exhilaration, excitement...and even tranquility.

With this year being our 50th Anniversary, we'll be celebrating all those incredible, golden moments since the brand's founder Jack Newington first launched the famous Fairline 19.

Please feel free to explore, or better yet, share your own Fairline Golden Moment on Twitter or Instagram with the hashtag **#YearOfGoldenMoments**



#YEAROFGOLDENMOMENTS AND BEYOND

A YEAR OF
Golden Moments



An unrivalled dealership network

Just like the many parts that make up one of our extraordinary yachts, so too are international dealers handpicked and perfectly placed to cover anything and everything you could want from Fairline (you can visit [fairline.com](https://www.fairline.com) for details of your nearest dealer).

Fairline Argentina
Fairline Benelux & W. Germany
Fairline Brazil
Fairline Channel Islands
Fairline Chertsey
Fairline Chesapeake
Fairline Colombia
Fairline Costa Blanca
Fairline Côte d'Azur
Fairline Croatia

Fairline Cyprus
Fairline Denmark
Fairline Eastbourne
Fairline Florida
Fairline Greece
Fairline Hong Kong
Fairline Ibiza
Fairline India
Fairline Indonesia

Fairline Israel
Fairline Italia
Fairline Japan
Fairline Korea
Fairline Lebanon
Fairline Malta
Fairline Menorca
Fairline Mexico
Fairline Middle East
Fairline Monaco

Fairline New South Wales
Fairline New York
Fairline New Zealand
Fairline North Mallorca
Fairline Poland
Fairline Portugal
Fairline Queensland
Fairline Russia
Fairline Singapore
Fairline South Africa

Fairline South China
Fairline South Mallorca
Fairline Southampton
Fairline Sverige
Fairline Switzerland
Fairline Thailand
Fairline Turkey
Fairline Ukraine
Fairline Victoria
Fairline Western Australia



SQUADRON 53

www.fairline.com