

SQUADRON 53

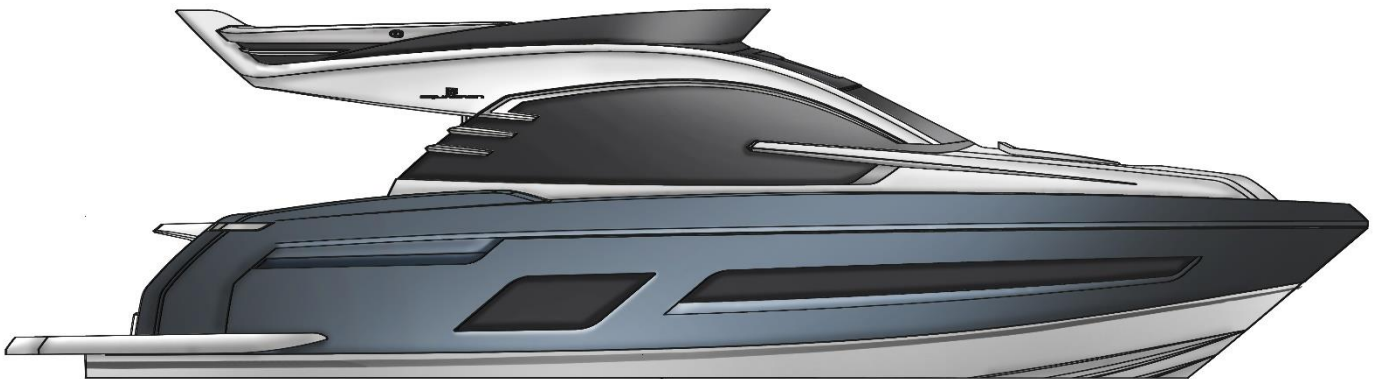
2018 Model Year - Standard Specification

Principle Dimensions

Length overall (inc. pulpit):	55'6" (16.92m)
Length overall (exc. pulpit):	53'6" (16.32m)
Beam (inc. gunwale):	14'10" (4.52m)
Number of berths:	6 – 9
Draught:	3'11" (1.20m)
Height above waterline (inc. arch & nav. light mast):	18'2" (5.56m)
Transport height:	17'1" (5.15m)
Dry weight (approx.):	21.16 imp. tons / 23.69 US tons (21,000kg)
Fuel capacity:	530 gallons / 637 US gallons (2,412 litres)
Water capacity (inc. calorifier):	120 gallons / 145 US gallons (550 litres)

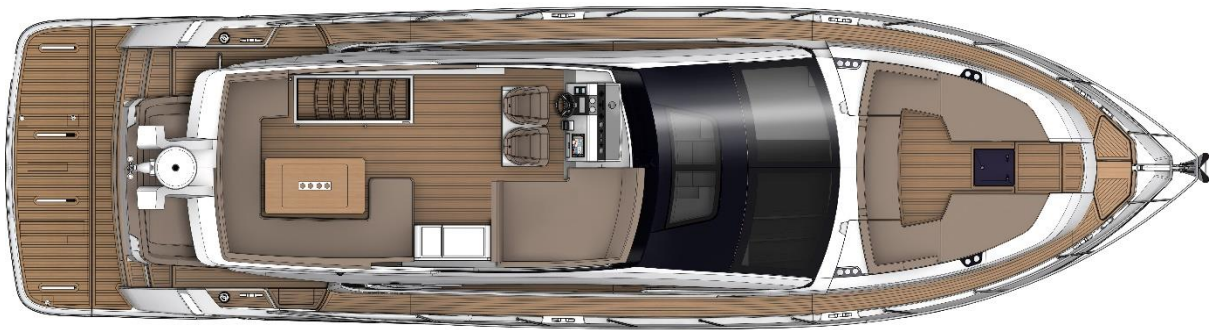
Engines & Performance

Twin Volvo Penta D11-675 shaft drive, diesel (675mhp each)	30 knots (estimated maximum)
Twin Volvo Penta D11-725 shaft drive, diesel (725mhp each)	32 knots
Twin Caterpillar C12.9 shaft drive, diesel (850mhp each)	34 knots (estimated maximum)

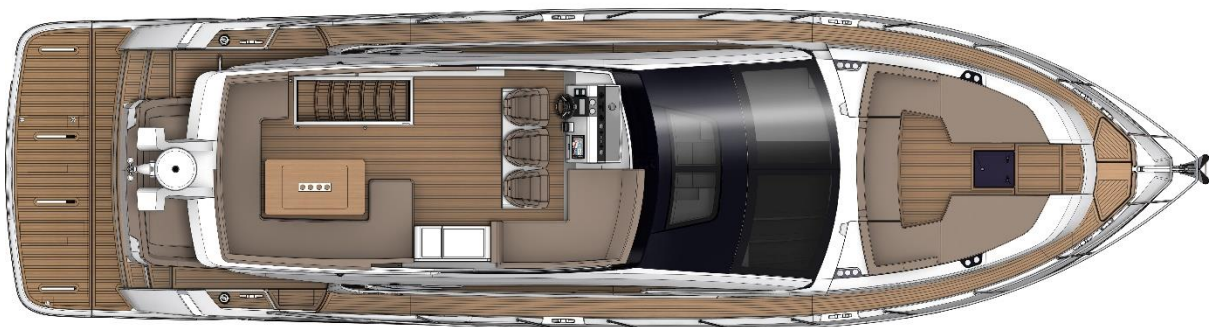


GENERAL ARRANGMENTS

Flybridge



Flybridge with (optional) triple helm seats



Main Deck Galley Up Forward



Main Deck Galley Up Aft



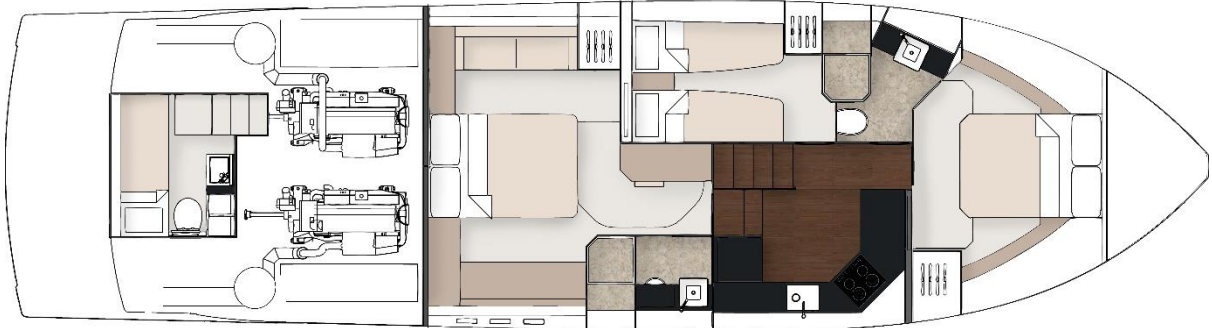
Main Deck Galley Down with saloon couch



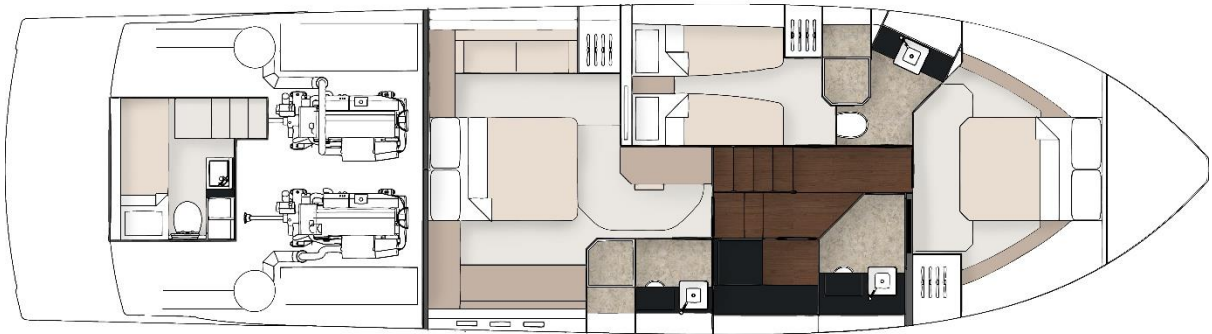
Main Deck Galley Down with saloon sideboard



Lower Deck 3 Cabin, Galley Down



Lower Deck 3 Cabin with day head & utility area



Lower Deck 4 Cabin



Deck

Anchor chain locker
Anchor winch (electric)
Anchor winch controls
Bathing platform ladder
Calibrated anchor chain (50m / 27.3 fathoms)
Ensign & staff
Fender set
Foredeck drinks holders
Foredeck glazing
Foredeck stowage lockers
Foredeck seating
Fuel fillers
Full set of IMCO navigation lights
Handrail
Hot & cold water transom shower
Moulded non-slip deck surface
Remote control searchlight
Riding light
Self-stowing Delta® anchor (25kg)
Stainless steel aft fairleads
Stainless steel bow fairleads
Stainless steel bow, cockpit, stern & twin spring cleats
Stainless steel gunwale with rubber inserts
Stainless steel pulpit
Teak laid bathing platform
Twin horns
Water filler
Windscreen washers
Windscreen wipers

Flybridge & Second Helm Position

12V weatherproof socket
Access hatch
Adjustable/tilt steering wheel
Bilge pump warning lights & audible alarms
Bolstered helm seating
Bow thruster controls
Drinks holders
Echosounder & speedometer/distance log repeater(s) with sea water temperature read out
Electronic single-lever throttle & gear controls for port & starboard engines



Flybridge & Second Helm Position (continued)

Fire extinguisher

Flybridge bar unit with refrigerator & sink

Garmin GMI 20 digital multi-function instrument system with colour display

Helm positioned to port for visibility through flybridge hatch

Hi/Lo teak table

High speed magnetic compass

Instrument covers

Moulded non-slip deck surface

Powered steering

Radar mast

Remote anchor winch controls

Remote control searchlight with controls at both helm stations

Repeat autopilot controls

Repeat engine bay fire extinguisher controls

Repeat flybridge engine instrumentation, controls & electronics

Rudder position indicator

Seat base covers

Seating adjacent to helm

Teak laid flybridge steps

Trim tab controls

Twin helm seats

Upholstered seating area with table, convertible to cushioned sunbathing area

VHF radio incorporating intercom

Wind-deflecting screen with grab rail

Helm Position

12V socket

Adjustable/tilt steering wheel

Bilge pump switches with integral operating warning lights & audible alarms

Black mesh windscreen covers

Bow thruster controls

Companion seating opposite helm with table

Controls for engine bay fire extinguisher system

Drinks holders

Electronic single-lever throttle & gear controls for port & starboard engines

Fuel gauges

Full engine instrumentation inc; tachometers, temperature gauges, audible alarms & engine hour meters

Garmin GHP 20 autopilot system

Helm Position (continued)

Garmin GMI 20 digital multi-function instrument system with colour display
Garmin VHF 300i marine radio
High speed magnetic compass
Opening window
Overhead glazing
Powered steering
Red night-light illumination to helm
Remote anchor winch controls
Rudder position indicator
Searchlight controls
Switches for navigation & riding lights, windscreen wipers & engine bay extractor fans
Trim tab controls
Twin helm seats

Electrical Systems

230 - 240V 50Hz
All 240V, 24V & 12V circuits (where applicable) protected by circuit breakers with main electrical load control panel
Heavy duty circuit breakers
Isolating switches to all batteries
Onan® 9.5kW generator

12 Volt

Voltage dropper from domestic batteries

24 Volt

Batteries - 2 x heavy duty batteries exclusively for port engine starting
Batteries - 2 x heavy duty batteries exclusively for starboard engine starting
Batteries - 4 x heavy duty batteries wired in parallel supplying domestic services & port engine starting
Circuit breaker for anchor winch
Emergency battery coupling system permits each engine to start from opposite battery bank
Regulated battery charger

240 Volt

Polarity check & earth leakage protection system
Power points throughout fed from shore power or generator
Regulated 75amp charger for domestic batteries
Shore power supply
Spare circuit breakers for optional equipment

Cockpit

12V heavy duty weatherproof socket
Access to lazarette or crew cabin
Access to side deck
Bathing platform lights
Boat hook
Deck level lighting
Drinks holders
Engine bay access hatch with stainless steel gas struts
Fender stowage
'J' shaped cockpit seating with adjustable backrest to make sunbed
Life raft stowage
Manual bilge pumps
Mooring warps
Mooring warp stowage
Port side access
Single level floor from cockpit to saloon
Teak laid floor throughout self-draining cockpit
Teak table with drinks holder
Transom gate
White vinyl cover

Interior Décor

Choice of interior finishes from the Amalfi, Capri, Hamptons or St Tropez interior styling ranges selected by the Fairline Interior Design Team

Hullform & Construction

Antifouling protection to hull
Bow thruster
Deep 'V' forward 12.5° deadrise aft
Design, layout & detailing by the Fairline Design Team.
Feature windows with opening portholes
Full length moulded spray deflectors
Hull/deck joint bolted & bonded
Integrally moulded engine bearers
Isophthalic gel coat backed by isophthalic resin-rich powder-bound glass mat
Resin infused cored hull & liner with hand-laid deck & components
Polyurethane foam cores throughout deck for strength & thermal insulation



Saloon

40" Samsung TV with Fusion AV750 DVD/Radio & wireless connectivity
Coffee table converts to dining table
FAIRLINE EDITION durable tumblers (set of 6)
Overhead lighting
Sideboard with stowage
Sliding patio door to cockpit
Sofas to port & starboard with stowage

Galley

Avonite work surface
Chopping board to sink infill
Crockery stowage
Extractor fan
FAIRLINE EDITION melamine dinner service (24-piece, 6 place settings)
Fire extinguisher
First aid kit
Full height fridge/freezer
Induction hob
Integrated waste bin
Microwave combi oven
Overhead lighting
Random oak floor
Sink with hot & cold mixer tap
Stowage cupboards & drawers

Lobby

Access to electrical control panel
Access to master cabin, guest cabins & day head
Handrail
Lighting to stair risers
Space for (optional) domestic appliance



Accommodation

Master Cabin

Aluminium venetian blinds
Double bed with storage drawers
Feature windows with opening portholes
Mirror
Overhead feature lighting
Reading lights
Sofa
Vanity unit with stool
Wardrobe

Master En-suite

Aluminium venetian blinds
Avonite vanity unit locker & basin with hot & cold pressurised water
Electric silent-flush freshwater toilet
Extractor fan
Full set of bathroom fittings
Full size shower with seat & hinged door
Large hull window with single opening port hole
Mirror
Mirrored lockers
Overhead lighting
Random oak floor
Shower tray automatic pump-out system

Forward Guest Cabin

Aluminium venetian blinds
Bedside table
Double bed with storage drawers
Escape hatch to foredeck
Feature windows with single opening porthole
Overhead glazing with blind
Overhead lighting
Reading lights
Wardrobe with mirrored doors

Forward Guest Cabin En-suite/Day Head

Aluminium venetian blinds
Day access
Electric silent-flush freshwater toilet
Extractor fan
Full set of bathroom fittings
Full standing height shower with hinged door
Mirror
Mirrored lockers
Overhead lighting
Random oak floor
Shower tray automatic pump-out system
Vanity unit locker & basin with hot & cold pressurised water

Port Side Guest Cabin

Aluminium venetian blinds
Bedside table
Feature windows with single opening porthole
Full length berths x 2
Mirror
Overhead lighting
Reading lights
Wardrobe

Starboard Guest Cabin

Bedside table
Bunk berths x 2
Mirror
Wardrobe

Lazarette

Access through hatch in cockpit seating

Crew Cabin (optional)

Access through hatch in cockpit seating
Electric silent-flush freshwater toilet
Feature window with blind
Full length berth
Hanging locker
Mirror
Opening porthole



Crew Cabin (continued)

Overhead lighting
Power point
Random oak floor
Sink with hot & cold mixer tap

Engines & Sterngear

Automatic bilge pumps for forward bilge, engine bay & rudder bay with manual 'on' override
Automatic engine bay fire extinguisher system
Dripless shaft seals
Electric engine bay fans
Electro-hydraulic trim tabs with cathodic protection
Engine air intakes
Engine bay lights
Engine room soundproofing
Exhaust overheat warning system
High capacity emergency manual bilge pump system with dedicated valves
Manganese bronze 'P' brackets
Manganese bronze propellers contra-rotating
Sea cocks on all inlets/outlets below waterline
Stainless steel alloy shafts

Fuel System

Changeover valve system enabling each engine to draw fuel from / return fuel to, either tank
Emergency fuel shut-off valves accessible via cable-operated remote control
High capacity water separators & fuel filters
Individual fillers & vents to port & starboard
Twin fuel tanks

Freshwater System

Automatic, pressurised supply
Calorifier hot water system
Water tank

Waste Water System

Holding tank (170 litres) with electric macerator pump-out

USA Specifications (in addition to, or in lieu of, those listed above)

Voltage - 2 x 110V (220V) 60Hz



Whilst every effort is made to keep all sales literature up to date, it should not be regarded as an infallible statement of current specifications & does not constitute an offer for the sale of any particular boat. We continually seek to improve the specification & design of our boats, so alterations & upgrades to specifications take place continually.

Appointed dealers are not agents of Fairline Yachts Ltd & are not authorised to commit Fairline Yachts Ltd by any express or implied undertaking or representation.

Performance Figures: Power quoted in our literature for diesel inboard engines is crankshaft output.

Performance Estimates: Performance estimates are given in good faith, but are in no way guaranteed for any particular model. Dirt on the bottom of the boat, damage to the propellers, engine tuning, external water & air temperatures & the weight of crew, fuel & water carried can all adversely affect performance. For those & other reasons we can give no performance guarantees.