

TARGA 48 OPEN

2018 Model Year – Standard Specification

Principle Dimensions

Length overall (inc. pulpit) fixed platform:	49'2" (15.0m)
Length overall (exc. pulpit) fixed platform:	48'6" (14.8m)
Length overall (inc. pulpit) submersible platform:	51'4" (15.64m)
Length overall (exc. pulpit) submersible platform:	50'8" (15.44m)
Beam (inc. gunwale):	14'2" (4.32m)
Number of berths:	4 – 7
Draught:	3'10" (1.17m) unloaded
Height above waterline (inc. arch & nav. light mast):	15'1" (4.6m)
Transport height:	15'10" (4.83m)
Dry weight (approx.):	12.79 imp. tons / 14.33 US tons (13,000kg)
Fuel capacity:	288 gallons / 346 US gallons (1,309 litres)
Water capacity (inc. calorifier):	106 gallons / 127 US gallons (482 litres)

Engines & Performance

2 x Volvo Penta IPS600 D6-435, diesel (435mhp each):	32 knots
2 x Volvo Penta IPS700 D8-550, diesel (550mhp each):	34 knots



GENERAL ARRANGMENTS

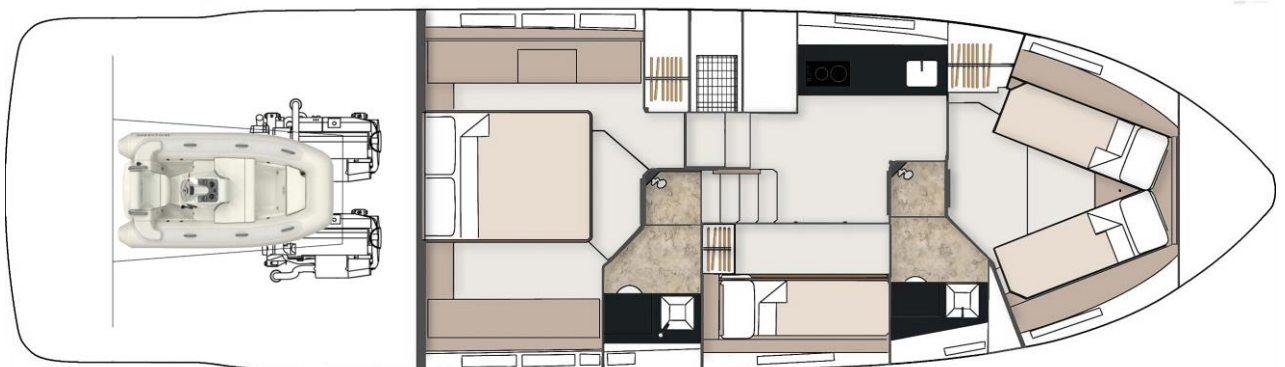
Main Deck



Lower Deck 2 Cabin



Lower Deck 3 Cabin





Deck

Anchor chain locker
Anchor winch controls
Anchor winch (electric)
Calibrated anchor chain
Dinghy garage
Ensign & staff
Fender set
Full set of IMCO navigation lights
Hot & cold water transom shower
Moulded non-slip deck surface
Recessed self-draining area on foredeck for coachroof sun cushions
Riding light
Rubbing strake
Self-stowing Delta® anchor
Stainless steel bow fairleads
Stainless steel bow, spring & stern cleats
Stainless steel handrails
Stainless steel pulpit
Stainless steel stemhead roller
Stainless steel transom wing cleats
Swim ladder to bathing platform
Teak-laid bathing platform (with option of submersible platform)
Toughened glass curved windscreen
Transom gate from cockpit to integral bathing platform
Twin horns
Water filler
Windscreen washers
Windscreen wipers

Helm Position

12V socket
Bilge pump switches with integral operating warning lights & audible alarms
Twin helm seat
Controls for engine bay fire extinguisher system
Drinks holders
Electronic single-lever throttle & gear controls for port & starboard engines
Folding foot plinth
Fuel gauges
Full engine instrumentation including; tachometers, oil pressure gauges, temperature gauges, audible alarms & engine hour meters
Garmin GMi 20 digital multi-function instrument system with colour display
Garmin VHF marine radio
Helm position indicator
High-speed magnetic compass



Helm Position (continued)

IPS joystick

Remote anchor winch controls

Searchlight with remote control at helm

Waterproof switches for navigation & riding lights, windscreen wipers & engine bay extractor fan

Electrical Systems

All 240V, 24V & 12V circuits (where applicable) protected by circuit breakers with main electrical load control panel

Electrical sockets

Heavy duty circuit breakers

Isolating switches to all batteries

12 Volt

Batteries – 2 x heavy duty batteries for domestic services

1 x heavy duty battery for exclusive port engine starting

1 x heavy duty battery for exclusive starboard engine starting

Emergency battery coupling system permits starboard engine to start port engine if domestic batteries accidentally discharged

240 Volt

Polarity check & earth leakage protection system

Power points throughout the boat fed from shore power or generator

Regulated battery charger

Shore power supply

Cockpit

12V heavy duty weatherproof socket

Bathing platform lights

Boat hook

Central dining area with table

Companion seating to helm

Drinks holders

Engine bay access hatch

Fender stowage

Glove locker

Life raft stowage

Manual bilge pumps

Mooring warps

Moulded non-slip deck surface

Stainless steel handrails

Step for side deck access

Stowage lockers under companion seat

Warp lockers

Waterproof speaker's x 2



Interior Décor

Choice of interior finishes from the Amalfi, Capri, Hamptons or St Tropez interior styling ranges selected by the Fairline Interior Design Team

Hullform & Construction

Antifouling protection to hull

Deep 'V' hull

Design, layout & detailing by the Fairline design team

Full length moulded spray deflectors

Hard top with electric sliding canvas roof

Hull colour - White

Integrally moulded engine bearers

Polyurethane foam cores throughout deck for strength & thermal insulation

Resin infused hull & internal liner

Transverse & longitudinal strengthening stringers throughout hull

Saloon

Access to day head

Aerial & connections for television

Cocktail table converts to dining table

Companionway timber steps with handrail

First aid kit

Hull window

LED ceiling lights

22" LCD television

Lockers (overhead)

Radio & iPod dock with 2 speakers

Sliding door to cockpit with integral blind system

Sofa

Stowage locker under dinette seating

Underfloor stowage locker

Galley

Control panel for 12V/240V domestic electrical circuits

Crockery stowage

Extractor fan

Fire extinguisher

Foundations® work surface with covers

Hob, oven & grill

Hull window

Integrated waste bin

Lacquered cupboard doors

Galley (continued)

LED ceiling lights
Lockers (overhead)
Sink with hot & cold mixer tap
Tall fridge/freezer with automatic 12V/240V change-over
Work surface lights

Master Cabin

Access to en suite
Bedside tables
Chest of drawers
Full length double bed
Full length mirror
LED ceiling lights
Opening portholes
Reading lights
Vanity unit
Wardrobe

Master En Suite

220V/240V shaving point
Automatic shower tray pump-out system
Electric silent-flush freshwater toilet
Extractor fan
Solid surface vanity unit locker & basin with hot & cold pressurised water
Full set of bathroom fittings
Full standing-height shower with integral shower tray & adaptable shower head
Hand basin with hot & cold water
Mirror
Opening porthole
Stowage locker

Forward Cabin

Access to shower/WC compartment
Bedside tables
Double bed converting to V-berth
Full length mirror
Hatch to foredeck
Headboard shelf unit
LED ceiling lights
Lockers (overhead)
Low level drawers
Opening portholes



Forward Cabin (continued)

Reading lights
Trinket locker
Wardrobe

Third Cabin (optional, in lieu of saloon)

Full length mirror
Full length twin bunk beds
LED ceiling lights
Opening porthole
Reading lights
Wardrobe

Guest En Suite

220V/240V shaving point
Automatic shower tray pump-out system
Electric silent-flush freshwater toilet
Extractor fan
Foundations® vanity unit locker & basin with hot & cold pressurised water
Full set of bathroom fittings
Full standing-height shower with integral shower tray & adaptable shower head
Hand basin with hot & cold water
Mirror
Opening porthole
Stowage locker

Engines & Sterngear

Automatic bilge pumps for engine bay with a manual 'on' override
Automatic engine bay fire extinguisher system
Electric engine bay fans
Electric trim tabs with cathodic protection
Engine bay lights
Engine room soundproofing
High capacity emergency manual bilge pump system with changeover valves
Sea cocks on all inlets/outlets below waterline

Fuel System

Changeover valve system to permit each engine to draw fuel from & return fuel to either tank
Emergency fuel shut-off valves
High capacity water separators & fuel filters
Individual fillers & vents to port & starboard
Twin fuel tanks



Freshwater System

Automatic, pressurised supply

Calorifier hot water system

Water tank

USA Specifications (in addition to or in lieu of those listed above)

Voltage - 2 x 110V (220V) 60Hz

Whilst every effort is made to keep all sales literature up to date, it should not be regarded as an infallible statement of current specifications & does not constitute an offer for the sale of any particular boat. We continually seek to improve the specification & design of our boats, so alterations & upgrades to specifications take place continually.

Appointed dealers are not agents of Fairline Yachts Ltd & are not authorised to commit Fairline Yachts Ltd by any express or implied undertaking or representation.

Performance Figures: Power quoted in our literature for diesel inboard engines is crankshaft output.

Performance Estimates: Performance estimates are given in good faith, but are in no way guaranteed for any particular model. Dirt on the bottom of the boat, damage to the propellers, engine tuning, external water & air temperatures & the weight of crew, fuel & water carried can all adversely affect performance. For those & other reasons we can give no performance guarantees.