

A YEAR OF  
*Golden Moments*



Indulge your passion for exploration  
in the finely-crafted

# TARGA 53 GT



Every. Perfect. Detail.





# Over the waves to your favourite locations in style

You've stocked the provisions, chosen a bay to explore and your guests are on board. The muscular power and grace of the Targa 53 GT awaits to take you all on an exhilarating journey.

From the visual impact of its bold and beautiful design, the Targa 53 GT has been carefully considered with uninterrupted freedom in mind. Every detail of the interior is thoughtfully created for maximum space, light and enjoyment.

Expert engineering gives exceptional handling, with a top speed in excess of 30 knots. Your party can relax on the open-plan main deck, with its spacious cockpit, luxuriously appointed saloon, sleep soundly in the spacious cabins below, or shower down after a swim – all in perfect harmony.

TARGA  
53 GT

INTRODUCTION

MAIN  
FEATURES

EXTERIOR  
DESIGN

INTERIOR  
DESIGN

PRINCIPLE  
DIMENSIONS

GENERAL  
ARRANGEMENTS

CELEBRATING  
50 YEARS

DEALERS

FAIRLINE  
YACHTS





# Intuitively ready for every journey

From the generous layout to the power of the engines, the Targa 53 GT has every little detail covered for enjoyable explorations on the high seas.

- **A bright, airy saloon with marble inset detailing**
- **Multiple layout options to suit your requirements**
- **Cockpit seating with sunbed conversion**
- **40" LCD television to saloon**
- **Optional gyroscopic stabiliser**
- **An optional cabin for crew**
- **A choice of powerful engines:**
  - 2 x Volvo Penta D11-675 shaft drive, diesel with 675mhp each and an estimated maximum speed of 30 knots
  - 2 x Volvo Penta D11-725 shaft drive, diesel with 725mhp each and an estimated maximum speed of 32 knots
  - 2 x Caterpillar C12.9 shaft drive, diesel with 850mhp each and an estimated maximum speed of 34 knots

TARGA  
53 GT

INTRODUCTION

MAIN  
FEATURES

EXTERIOR  
DESIGN

INTERIOR  
DESIGN

PRINCIPLE  
DIMENSIONS

GENERAL  
ARRANGEMENTS

CELEBRATING  
50 YEARS

DEALERS

**FAIRLINE**  
YACHTS





TARGA  
53 GT

INTRODUCTION

MAIN  
FEATURES

EXTERIOR  
DESIGN

INTERIOR  
DESIGN

PRINCIPLE  
DIMENSIONS

GENERAL  
ARRANGEMENTS

CELEBRATING  
50 YEARS

DEALERS

  
**FAIRLINE**  
YACHTS





The Targa 53 GT gracefully  
provides everything for the perfect adventure

TARGA  
53 GT

INTRODUCTION

MAIN  
FEATURES

EXTERIOR  
DESIGN

INTERIOR  
DESIGN

PRINCIPLE  
DIMENSIONS

GENERAL  
ARRANGEMENTS

CELEBRATING  
50 YEARS

DEALERS

  
**FAIRLINE**  
YACHTS





TARGA  
53 GT

INTRODUCTION

MAIN  
FEATURES

EXTERIOR  
DESIGN

INTERIOR  
DESIGN

PRINCIPLE  
DIMENSIONS

GENERAL  
ARRANGEMENTS

CELEBRATING  
50 YEARS

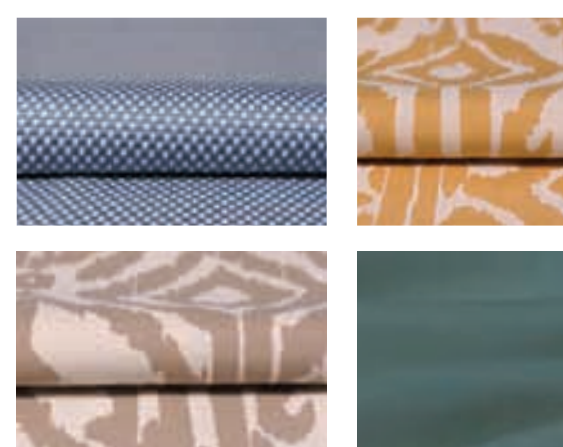
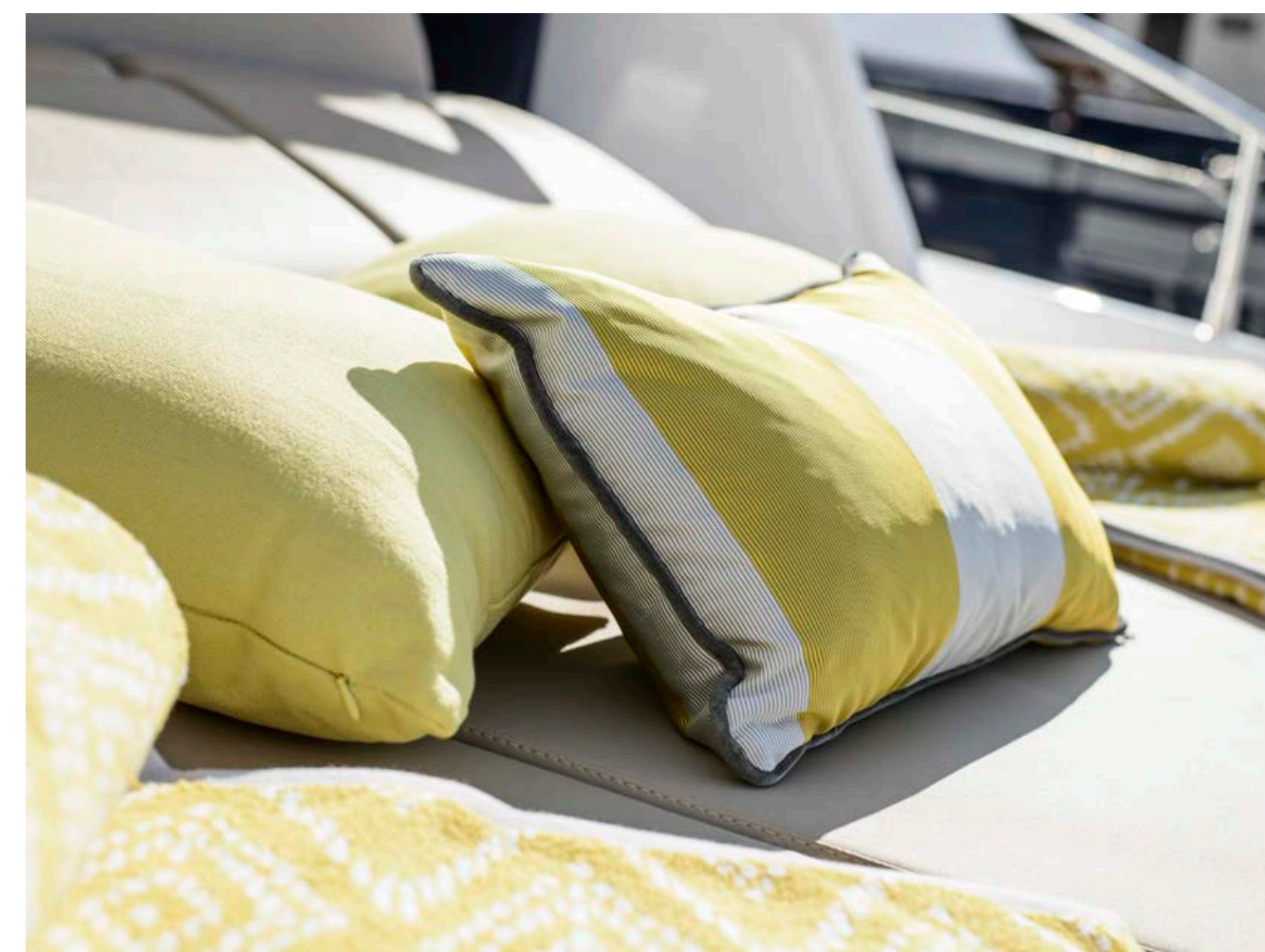
DEALERS

  
**FAIRLINE**  
YACHTS



# The choice of interior is equally extensive

This is especially true, given the fact that we have handpicked four beautiful interior design schemes for you to choose from:



## AMALFI

Inspired by Liguria's local architecture, this scheme exudes the sunny warmth synonymous with fragrant Italian lemon trees and the umbrella-lined shores of the Amalfi coast.



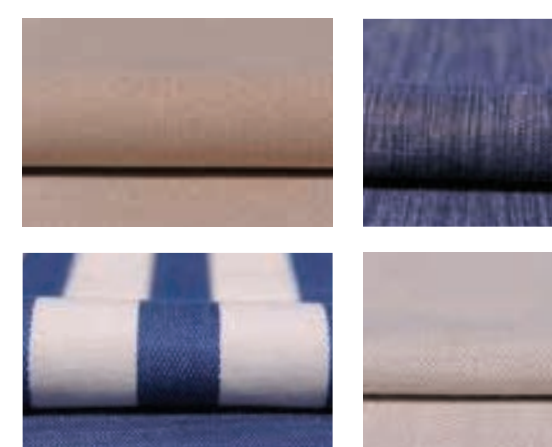
## CAPRI

Understated, earthy colours, effortlessly combined with rich natural textures. All the hallmarks of an interior design collection that is as gentle as the Mediterranean breeze.



## HAMPTONS

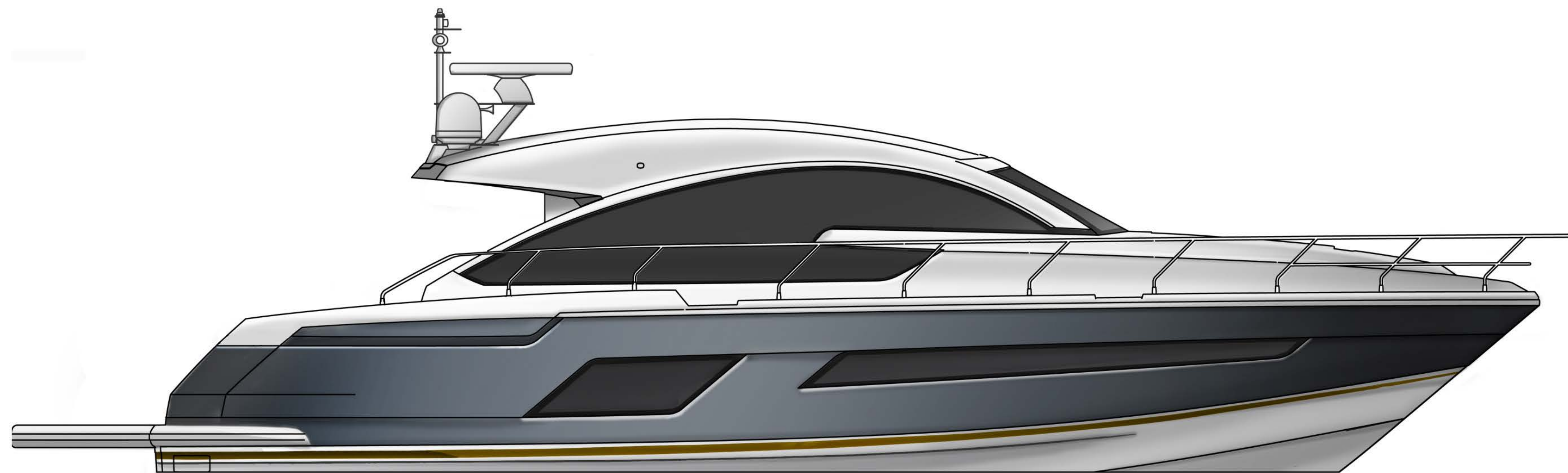
Evoking elegant vintage design cues, whilst offering a bold and contemporary interpretation of the luxury that was once the preserve of America's East Coast.



## ST. TROPEZ

An ode to the sea where all manner of deep, oceanic blues tastefully swirl with muted greys, delicate creams and classic nautical motifs.





## Proportions balanced for maximum space

- Length overall (inc. pulpit): 55'6" (16.92m)
- Length overall (exc. pulpit): 53'6" (16.32m)
- Beam (inc. gunwale): 14'10" (4.52m)
- Number of berths: 6 – 9
- Draught: 3'11" (1.20m) unloaded
- Height above waterline (inc. arch & nav. light mast): 15'1" (4.60m)
- Transport height: 15'11" (4.87m)
- Dry weight (approx.): 19.19 imp. tons / 21.49 US tons (19,500kg)
- Fuel capacity: 530 gallons / 637 US gallons (2,412 litres)
- Water capacity (inc. calorifier): 120 gallons / 145 US gallons (550 litres)

[CLICK HERE FOR  
FULL SPECIFICATIONS](#)

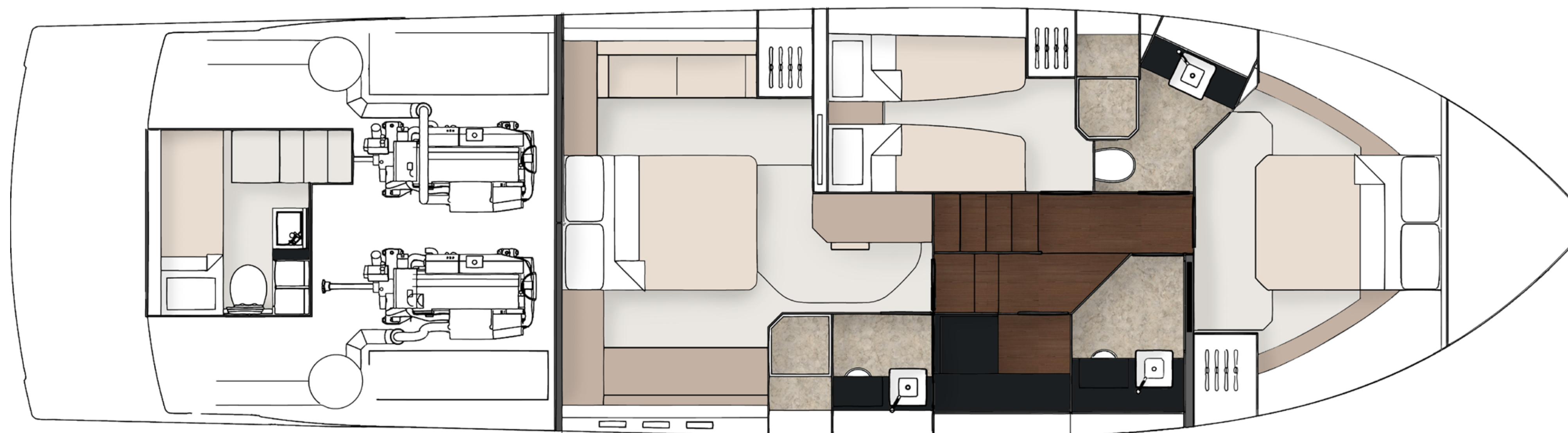




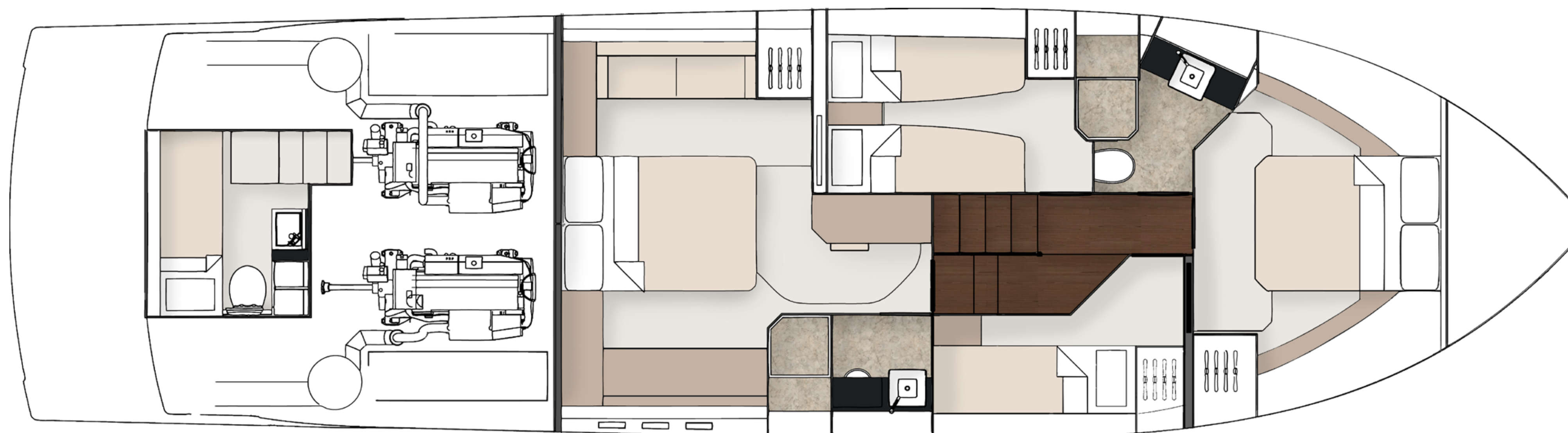
## Main Deck – Galley Up

Beautifully finished and spacious, the main deck is where you and your guests can really stretch out and relax in style.





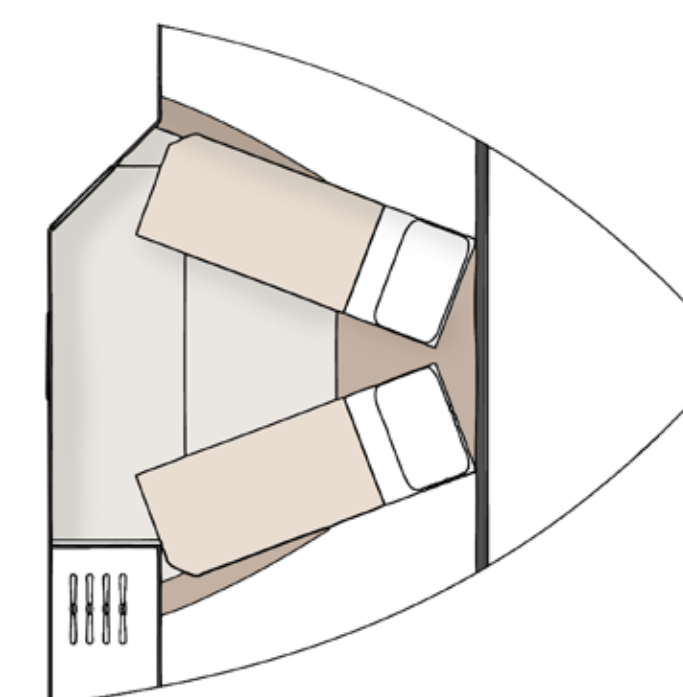
3 Cabin with day head & utility area



4 Cabin

## Lower Deck

There's ample space between the main and guest bedrooms, creating a light and airy living area with 2 or 3-head options.



Forward cabin  
scissor berth option





TARGA  
53 GT

INTRODUCTION

MAIN  
FEATURES

EXTERIOR  
DESIGN

INTERIOR  
DESIGN

PRINCIPLE  
DIMENSIONS

GENERAL  
ARRANGEMENTS

CELEBRATING  
50 YEARS

DEALERS



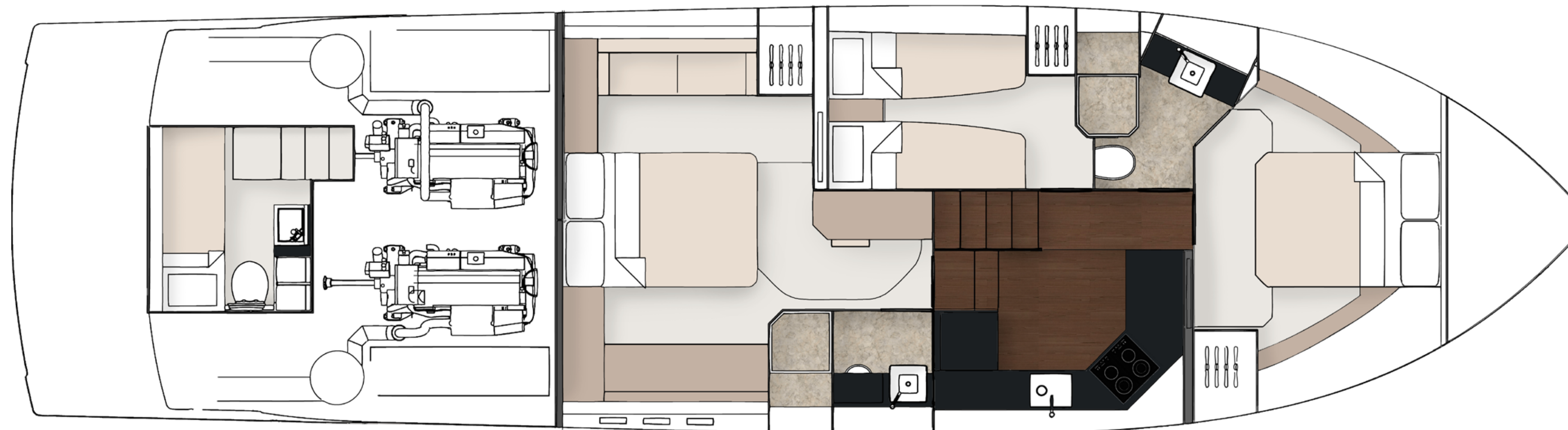
Saloon Couch



Saloon Sideboard

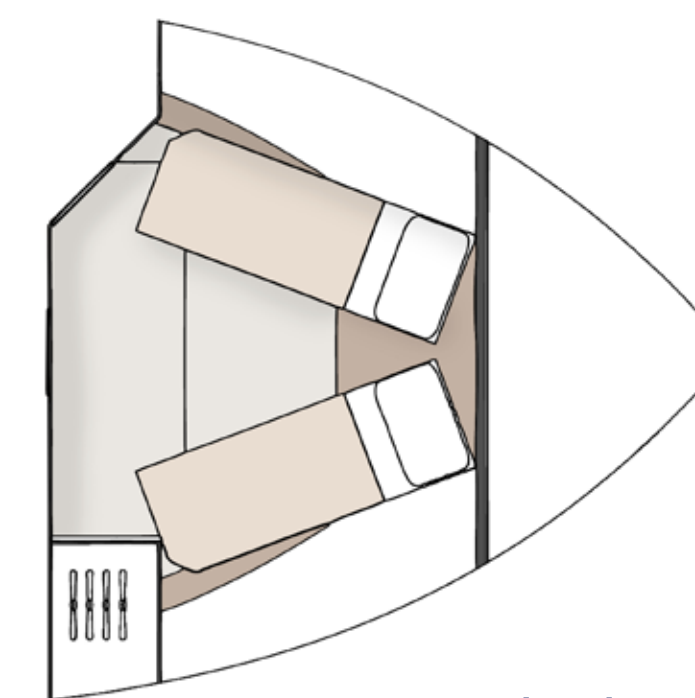
## Main Deck – Galley Down





## Lower Deck – Galley Down

Free more space in the main saloon by moving the galley down to the lower deck. This replaces the fourth cabin, but with still enough room for two full-sized double beds (master and forward guest cabins) and two full-sized single beds (port guest cabin). A single-bed aft crew cabin with en suite is optional.



Forward cabin  
scissor berth option



# 2017 is our 50th anniversary

## And we're celebrating a #YearOfGoldenMoments

It's not enough to build a beautiful boat just for the sake of it. Building the kind of yachts which we are proud to put the Fairline name to, requires something more than just engineering genius or craftsmanship. It also requires the desire to create extraordinary moments for whoever owns it. Moments of joy, exhilaration, excitement...and even tranquility.

With this year being our 50th Anniversary, we'll be celebrating all those incredible, golden moments since the brand's founder Jack Newington first launched the famous Fairline 19.

Please feel free to explore, or better yet, share your own Fairline Golden Moment on Twitter or Instagram with the hashtag **#YearOfGoldenMoments**

A YEAR OF  
*Golden Moments*

INTRODUCTION

MAIN  
FEATURES

EXTERIOR  
DESIGN

INTERIOR  
DESIGN

PRINCIPLE  
DIMENSIONS

GENERAL  
ARRANGEMENTS

CELEBRATING  
50 YEARS

DEALERS



#YEAROFGOLDENMOMENTS AND BEYOND



# An unrivalled dealership network

Just like the many parts that make up one of our extraordinary yachts, so too are international dealers handpicked and perfectly placed to cover anything and everything you could want from Fairline (you can visit [fairline.com](https://www.fairline.com) for details of your nearest dealer).

Fairline Argentina  
Fairline Benelux & W. Germany  
Fairline Brazil  
Fairline Channel Islands  
Fairline Chertsey  
Fairline Chesapeake  
Fairline Colombia  
Fairline Costa Blanca  
Fairline Côte d’Azur  
Fairline Croatia

Fairline Cyprus  
Fairline Denmark  
Fairline Eastbourne  
Fairline Florida  
Fairline Greece  
Fairline Hong Kong  
Fairline Ibiza  
Fairline India  
Fairline Indonesia

Fairline Israel  
Fairline Italia  
Fairline Japan  
Fairline Korea  
Fairline Lebanon  
Fairline Malta  
Fairline Menorca  
Fairline Mexico  
Fairline Middle East  
Fairline Monaco

Fairline New South Wales  
Fairline New York  
Fairline New Zealand  
Fairline North Mallorca  
Fairline Poland  
Fairline Portugal  
Fairline Queensland  
Fairline Russia  
Fairline Singapore  
Fairline South Africa

Fairline South China  
Fairline South Mallorca  
Fairline Southampton  
Fairline Sverige  
Fairline Switzerland  
Fairline Thailand  
Fairline Turkey  
Fairline Ukraine  
Fairline Victoria  
Fairline Western Australia





# TARGA 53 GT